



Worm Geared Motors

NMRV[®] **NMRV**[™]
POWER

Features

NMRV and NMRVpower worm gear reducers currently re-present the most advanced solution to market requirements in terms of **efficiency** and **flexibility**. The new NMRVpower series, also available as compact integral helical/worm option, has been designed to guarantee a **high modularity**. Low number of basic models can be applied to a **wide range of power ratings** guaranteeing high performance.

NMRV®

Sizes:

025-030-040-050-130-150



NMRV

Fitted for motor coupling



NMRV-P

Fitted for motor coupling

NMRV™ POWER

Sizes:

063-075-090-110

- Cases up to 110 in die-cast aluminium alloy and over 130 in G200 grey cast iron
- Aluminium units are supplied complete with synthetic oil and allow for universal mounting positions, with no need to modify lubricant quantity
- Worm wheel: bronze Cu Sn12 Ni2 (UNI7013-10)
- Ground worm profile ZI (UNI4760)
- Excellent mechanical strength and particularly lightweight
- Loading capacity in accordance with: ISO.14521, DIN.3996, BS 721, AGMA 6034, ISO 6336, DIN 3990, DIN 743, ISO 281
- Size 030 and over are painted with RAL 5010 blue epoxy-polyester powder according to DIN 1843
- Available with pre-stage unit: PC for NMRV Series, HW for NMRV-P Series
- Worm gear reducers are available with different combinations: NMRV/NMRV, NMRV/NMRV-P, NMRV-P/NMRV-P and NMRV-P/NMRV
- ATEX versions available: 3GD/2GD

Other Versions



NRV With Input Shaft



NRV-P With Input Shaft



NMRV/NMRV-P Combined Worm Geared Motor

Range

Worm Geared Motor



	Output torque M_2 [Nm]		Ratio	
	Min	Max	Min	Max
NMRV 030	13	19	5	80
NMRV 040	29	48		
NMRV 050	55	88		
NMRV-P 063	118	160	7,5	100
NMRV-P 075	180	247		
NMRV-P 090	270	432		
NMRV-P 110	483	725		
NMRV 130	740	1.050		
NMRV 150	1.000	1.550		

- Power up to 15 kW
- Ratios between 5 and 100
- Max Torque 1.550 Nm
- Admissible radial loads max 18.000 N

Combined Worm Geared Motor



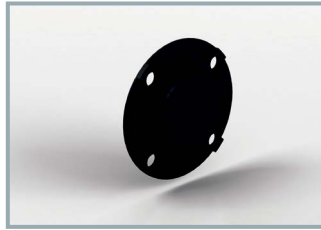
	Output torque M_2 [Nm]		Ratio	
	Min	Max	Min	Max
NMRV 030/040	43	73	100	5.000
NMRV 030/050	79	145		
NMRV 030 / NMRV-P 063	150	271		
NMRV 040/050	120	145		
NMRV 040 / NMRV-P 063	231	271		
NMRV 040 / NMRV-P 075	352	444		
NMRV 040 / NMRV-P 090	361	700		
NMRV 050 / NMRV-P 090	560	700		
NMRV 050 / NMRV-P 110	648	1.265		
NMRV-P 063/110	1.100	1.265		
NMRV-P 063 / NMRV 130	1.123	1.760		
NMRV-P 063 / NMRV 150	1.971	2.670		

- Power up to 1,85 kW
- Ratios between 100 and 5.000
- Max Torque 2.670 Nm



Accessories

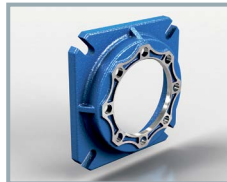
Protection Cover



Output Flanges

	FA	FB	FC	FD	FE
NMRV 030	•	/	/	/	/
NMRV 040	•	•	•	•	/
NMRV 050	•	•	•	•	/
NMRV-P 063	•	•	•	•	•
NMRV-P 075	•	•	/	/	/
NMRV-P 090	•	•	•	•	/
NMRV-P 110	•	•	/	/	/
NMRV 130	•	/	/	/	/
NMRV 150	•	/	/	/	/

• Available
/ Not Available



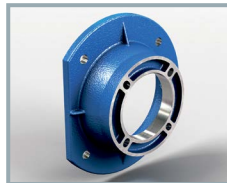
FA



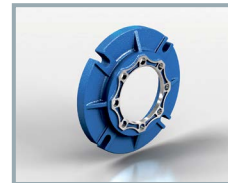
FB



FC



FD



FE

Solid Output Shaft



Single output shaft



Double output shaft

Torque Arm



Torque Limiter

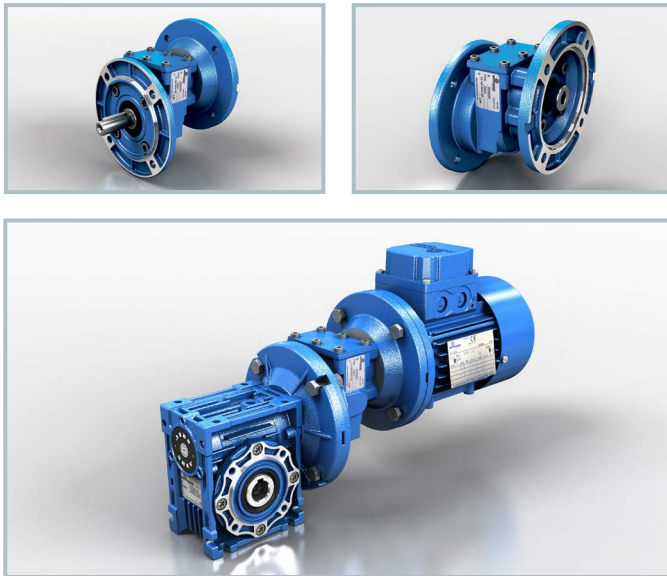
Available versions NMRL 050
and NMRL-P 063-075-090



Other Accessories

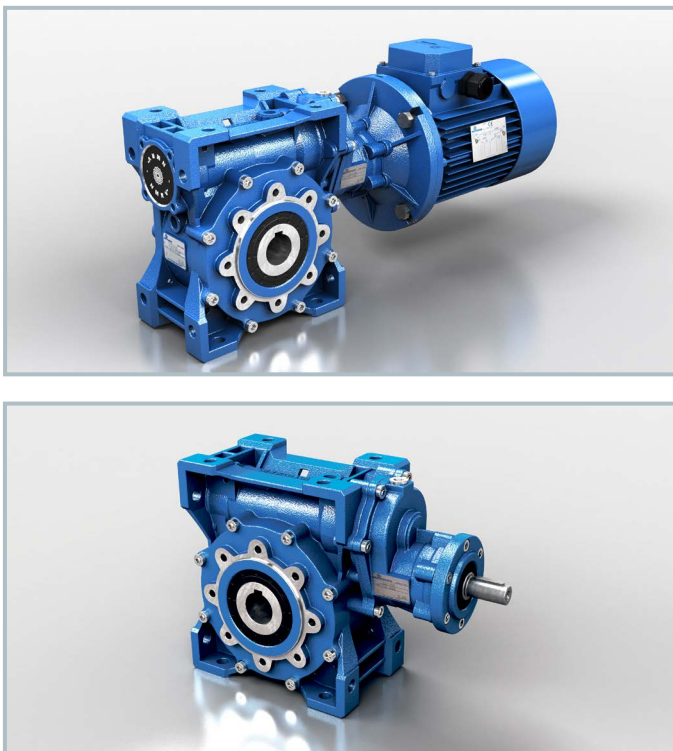
- Viton oil seals
- Low/high temperature and food grade oil
- Filling/Drain/Breather/Level plug
- Reinforced Output

NMRV Worm geared motor with HA31 pre-stage



- HA31 is the new single stage helical gear reducer available as pre-stage for the worm gear boxes NMRV040 and NMRV050; it can be supplied as a separate unit to be mounted on any type of fitted geared motor
- Die-cast aluminium alloy casing; gears hardened and tempered with shaved profile steel 20MnCr5 (UNI7846)
- Available as unpainted or painted with RAL 5010 blue epoxy-polyester powder
- Power up to 1,1 kW and motor sizes up to 080
- Combined total ratios between 22,08 and 315
- Max Torque of group HA31+worm gear reducer 206 Nm

NMRV-P Worm geared motor with HW pre-stage



- The pre-stage units called HW are two: HW030 which can be mounted on gearboxes NMRVpower063-075 and HW040 which can be fitted with gearboxes NMRVpower 090-110
- The pre-stage construction is modular and therefore it can be supplied for various motor (PAM) with B5 and B14 flange
- Casing in aluminium alloy. Steel gears 20MnCr5(UNI7846), hardened, tempered and carefully scraped
- Power up to 1,85 kW and motor sizes up to 090
- Combined total ratios between 22,08 and 1.083,33
- Max Torque of group HW+worm gear reducer 1.189 Nm

WORLDWIDE



Subsidiaries

Germany

France

Spain

United Kingdom

Denmark

USA

China

India



Italy

Australia

Benelux

Bulgaria

China

Finland

France

India

Ireland

Israel

Lithuania

Malaysia

Netherlands

Poland

Portugal

South Korea

Spain

Sweden

Thailand

Turkey

United Kingdom

Ukraine

USA

